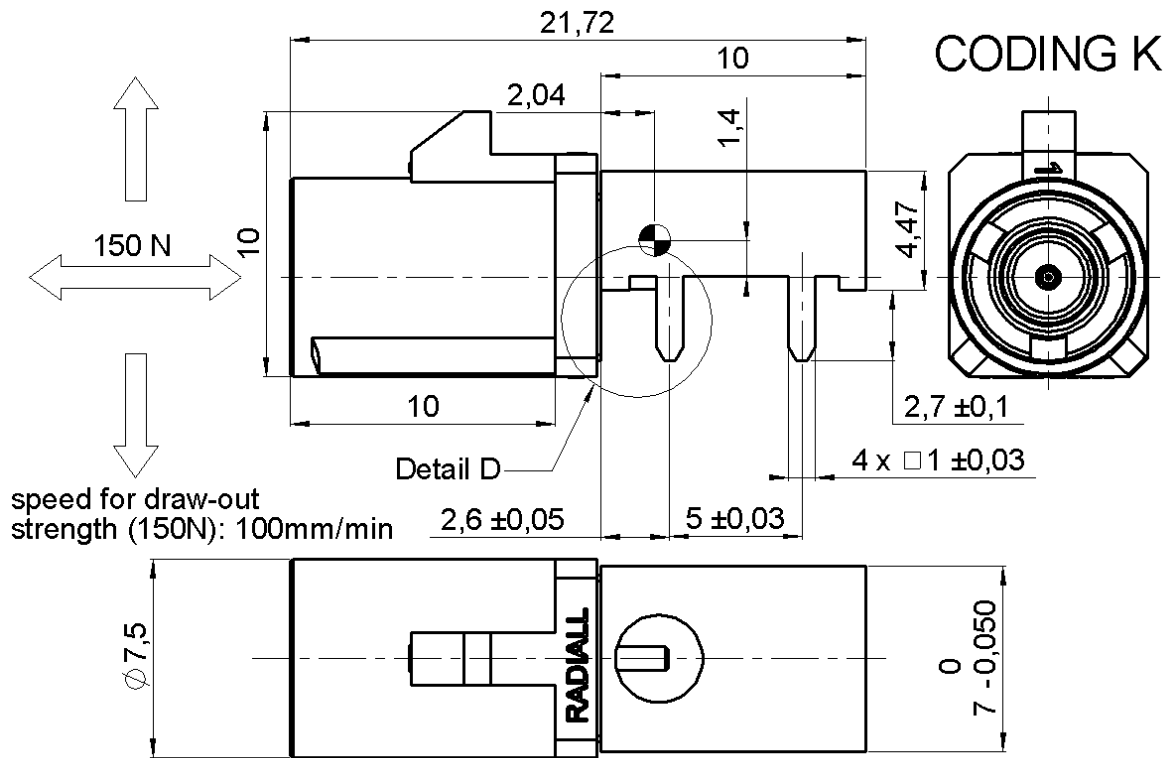


STRAIGHT PCB RECEPTACLE
EDGE CARD - PIN IN PASTE VERSION

R197.160.K07

Series : **SMB**
CARLOCK



All dimensions are in mm.

COMPONENTS	MATERIALS	PLATINGS (µm)	
BODY	BRASS	GOLD 0.2 OVER NICKEL 2	
CENTER CONTACT	BRASS	GOLD 0.5 OVER NICKEL 2	
OUTER CONTACT	-	-	
INSULATOR	PTFE	-	
GASKET	-	-	
OTHERS PARTS	-	-	
-	-	UL CLASSIFICATION	COLOR
HOUSING	PA 4.6 30%GF	UL 94 V2	CURRY RAL 1027
		* According to FAKRA specification	

Issue : 0616 A

In the effort to improve our products, we reserve the right to make changes judged to be necessary.



STRAIGHT PCB RECEPTACLE
EDGE CARD - PIN IN PASTE VERSION

R197.160.K07

Series : **SMB**
CARLOCK

PACKAGING

Standard	Unit	Other
350	'W' option	Contact us

SPECIFICATION

SIEMENS VDO 65 61 13.27.10-20 A

ELECTRICAL CHARACTERISTICS

Impedance	50	Ω
Frequency	0-4	GHz
VSWR	1.06* + 0,0130	x F(GHz) Maxi
Insertion loss	0.03*	$\sqrt{F(GHz)}$ dB Maxi
RF leakage	- (- F(GHz)) dB Maxi
Voltage rating	335	Veff Maxi
Dielectric withstanding voltage	1000	Veff mini
Insulation resistance	1000	M Ω mini

ENVIRONMENTAL

Operating temperature	-40/+110	$^{\circ}$ C
Hermetic seal	NA	Atm.cm3/s
Panel leakage	NA	

OTHERS CHARACTERISTICS

Assembly instruction

Others :

* COAX TRANSMISSION ONLY

MECHANICAL CHARACTERISTICS

Center contact retention		
Axial force – Mating end	10	N mini
Axial force – Opposite end	10	N mini
Torque	NA	N.cm mini
Recommended torque		
Mating	NA	N.cm
Panel nut	NA	N.cm
Mating life	100	Cycles mini
Weight	2,8200	g

Issue : 0616 A

In the effort to improve our products, we reserve the right to make changes judged to be necessary.

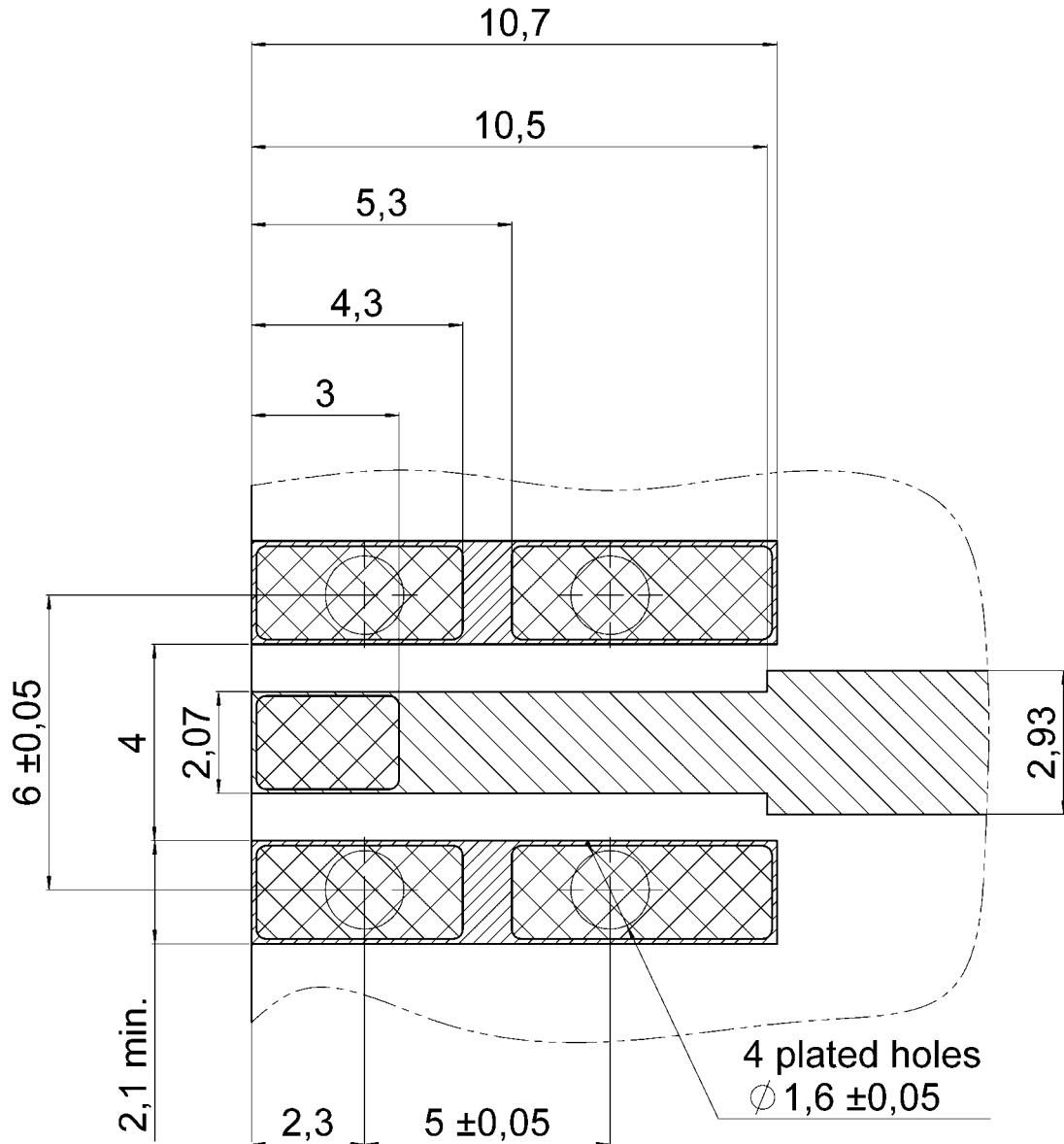


STRAIGHT PCB RECEPTACLE
EDGE CARD - PIN IN PASTE VERSION

R197.160.K07

Series : SMB
 CARLOCK

MOUNTING ZONE FOR RECEPTACLE



Thickness of PCB: 1,6 mm.

Material of PCB: FR4 ($\epsilon_r = 4.6$).

Solder paste has to be printed onto the land of solder and into holes to permit Pin In Hole Reflow

-  Ground track
-  Signal track
-  Land for solder

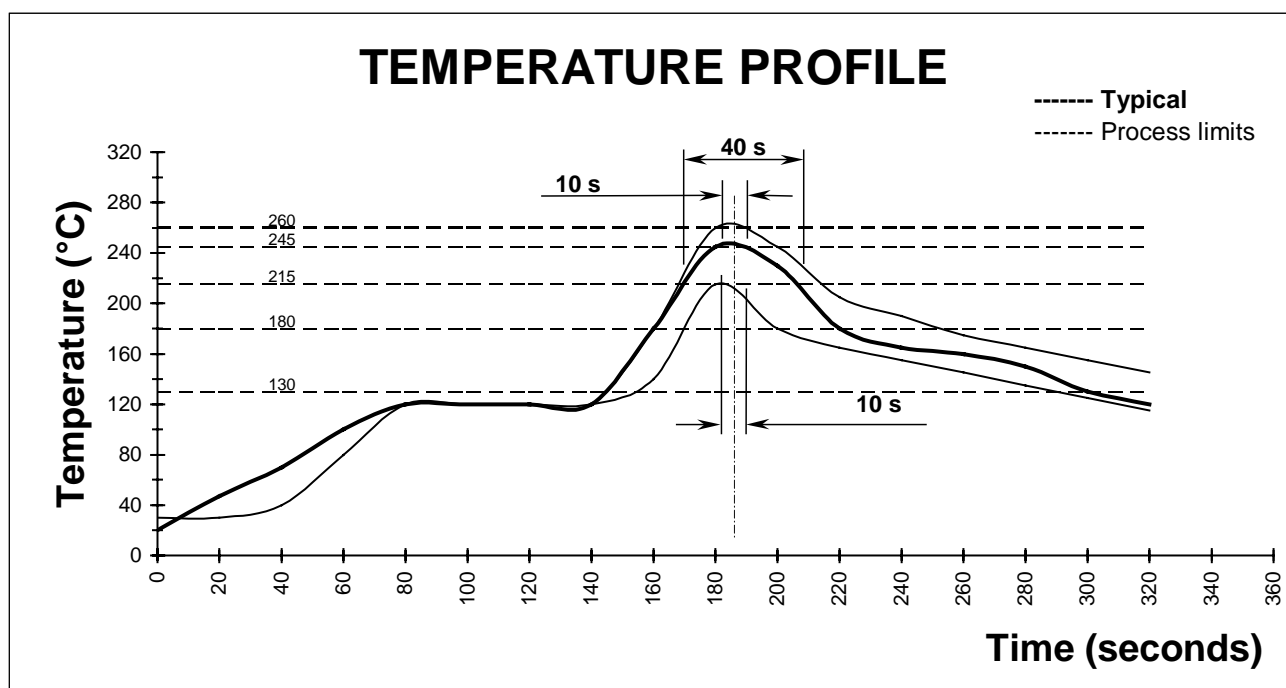
Issue : 0616 A

In the effort to improve our products, we reserve the right to make changes judged to be necessary.



STRAIGHT PCB RECEPTACLE**EDGE CARD - PIN IN PASTE VERSION****R197.160.K07**Series : **SMB**
CARLOCK**SOLDER PROCEDURE**

- 1 - Deposit solder paste "Sn63Pb35Ag2" on mounting zone by screen printing application. We recommend a low Residue Solid Flux.
We advise a thickness of 0,2 millimetres min. (0,008 inch min.).
The holes must be totally filled with cream
Verify that the edges of the zone are clean.
- 2 - Placement of the receptacle on the mounting zone with an automatic machine of "pick and place" type.
Video camera is preferred to check the positioning of the component .
Adhesive agents are forbidden on the receptacle.
- 3 - Soldering by reflow process.
The typical profile to use is given below.
- 4 - Clean printed circuit boards.
- 5 - Check of solder joints and position of the component by visual inspection



Issue : 0616 A

In the effort to improve our products, we reserve the right to make changes judged to be necessary.



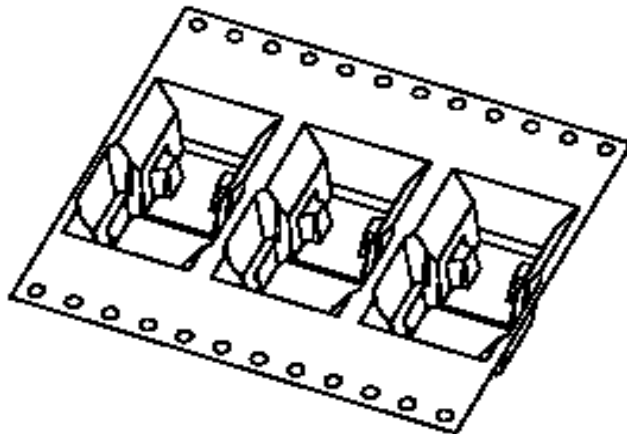
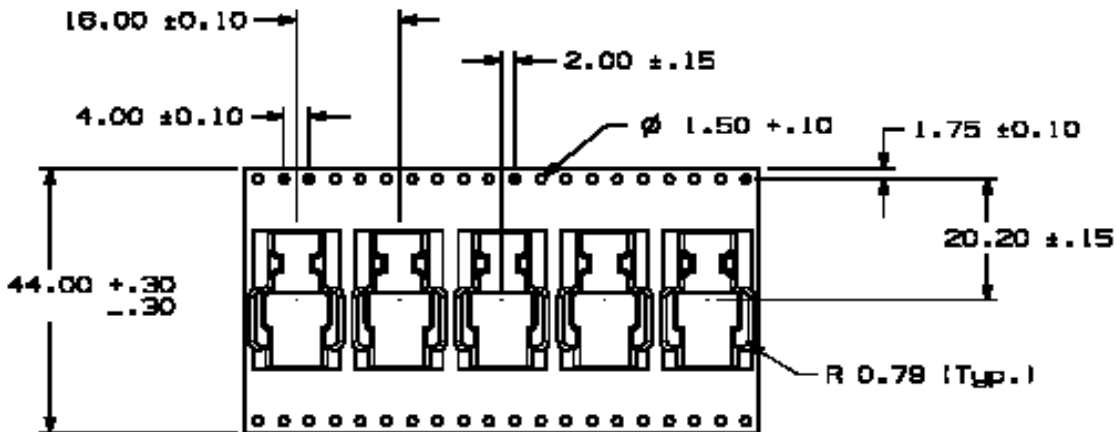
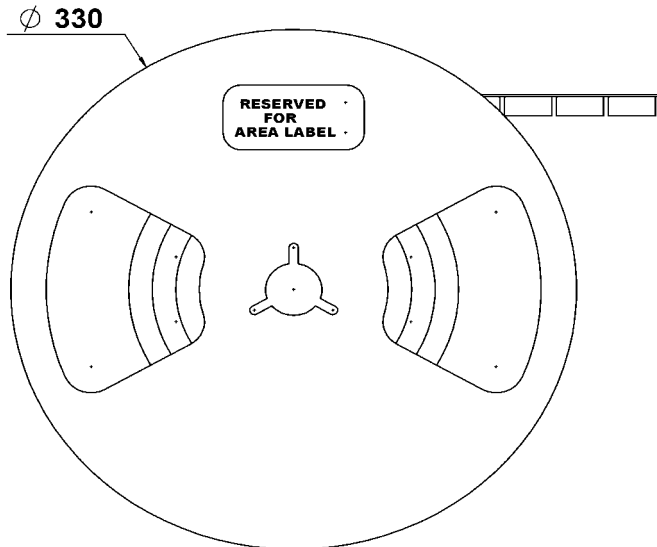
STRAIGHT PCB RECEPTACLE
EDGE CARD - PIN IN PASTE VERSION

R197.160.K07

Series : SMB
 CARLOCK

REEL PAKAGING PER 350

CELL MATERIAL :
 Polycarbonate
 COVER TAPE MATERIAL :
 conductive polyester film tape



Issue : 0616 A

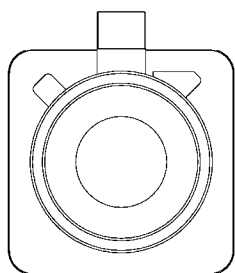
In the effort to improve our products, we reserve the right to make changes judged to be necessary.



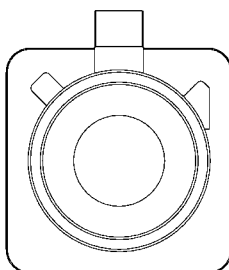
STRAIGHT PCB RECEPTACLE
EDGE CARD - PIN IN PASTE VERSION

R197.160.K07

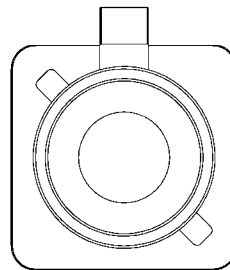
Series : SMB
CARLOCK



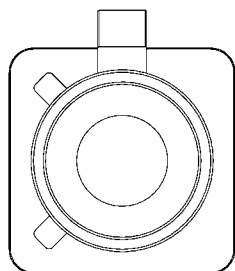
CODING A
 COLOR BLACK
 RAL 9005



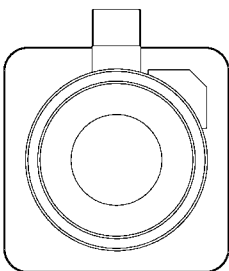
CODING B
 COLOR WHITE
 RAL 9003



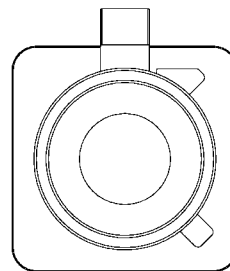
CODING C
 COLOR BLUE
 RAL 5005



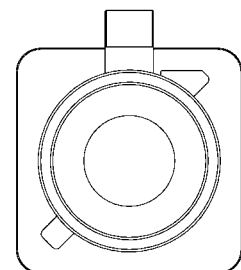
CODING D
 COLOR BORDEAUX
 VIOLET
 RAL 4004



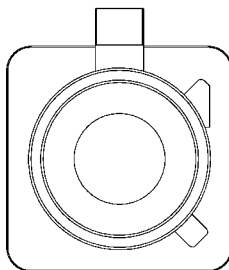
CODING E
 COLOR GREEN
 RAL 6002



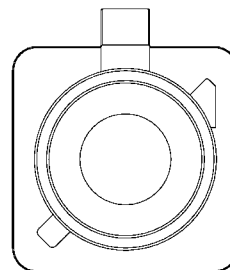
CODING F
 COLOR BROWN
 RAL 8011



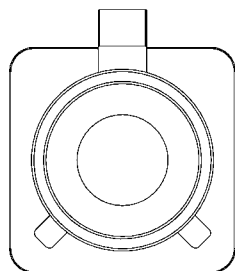
CODING G
 COLOR GREY
 RAL7031



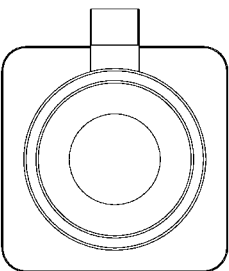
CODING H
 COLOR VIOLET
 RAL 4003



CODING I
 COLOR BEIGE
 RAL 1001



CODING K
 COLOR CURRY
 RAL 1027



CODING Z
 COLOR WATER BLUE
 RAL 5021

UL CLASSIFICATION
 UL 94V-2

*According to FAKRA specifications

To obtain other coding for the connector please change the letter by the needed coding letter into the Part Number

Issue : 0616 A

In the effort to improve our products, we reserve the right to make changes judged to be necessary.

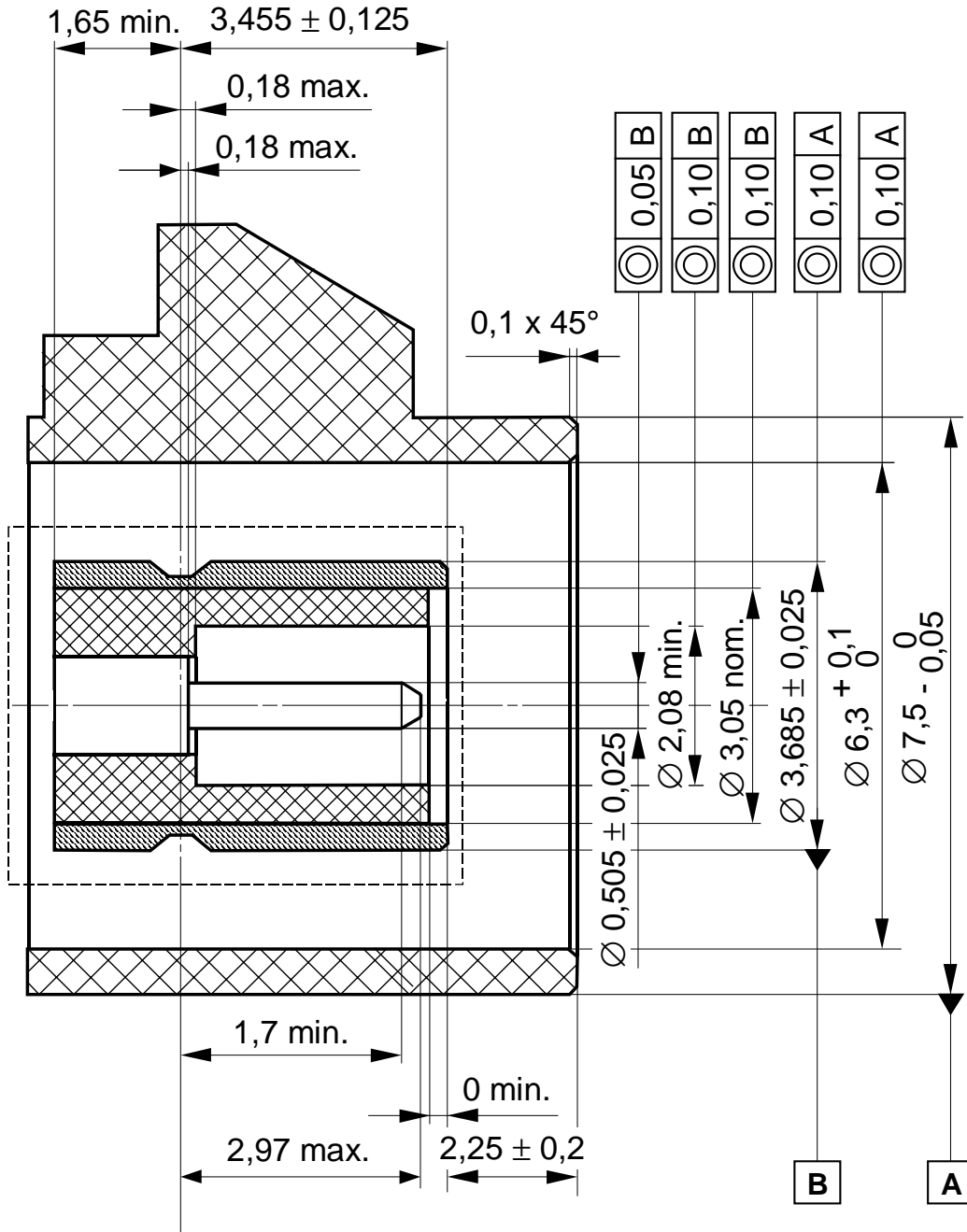


STRAIGHT PCB RECEPTACLE
EDGE CARD - PIN IN PASTE VERSION

R197.160.K07

Series : **SMB**
CARLOCK

CONNECTOR INTERFACE ACCORDING TO FAKRA STANDARD



Issue : 0616 A

In the effort to improve our products, we reserve the right to make changes judged to be necessary.

